

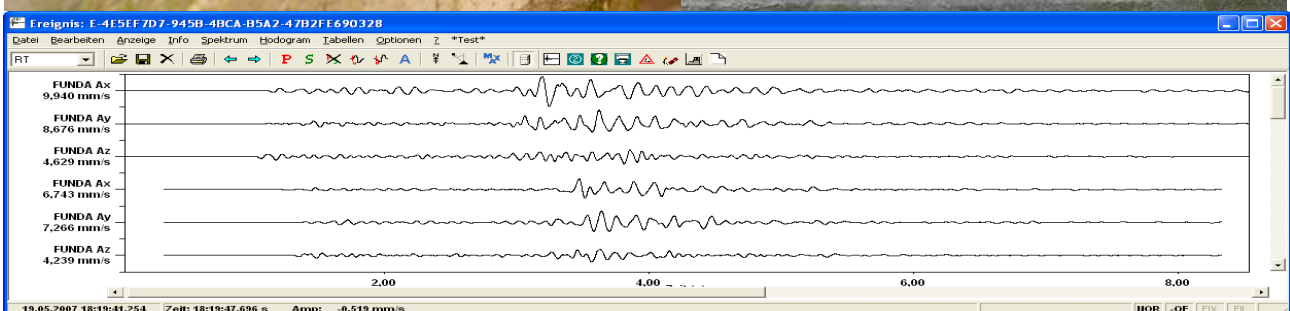
SUMMIT M Hydra

The Seismic 'Monitoring System'!

The SUMMIT M Hydra is the new multi-channel SUMMIT seismograph for seismological surveillance: The box with up to twenty-four monitoring channels has an extra wide frequency range and a very low noise level for ultra sensitive seismological applications. It provides continuous and event based recording.

Specialised for Mobile Seismological Monitoring!

- Most flexible station deployment with Ethernet or wireless LAN telemetry
- Most accurate time base for continuous recording through GPS
- Extremely robust but lightweight casing
- Autonomous operation with up to 8 GB of internal memory for data storage
- Supreme service via rapid reaction support hotline



Technical Specifications

Sample Interval	125 Hz up to 16 kHz
Frequency Range	0.1 Hz up to Nyquist (8 kHz)
Recording Mode	Continuous or event based
Trigger Mode	Level, STA/LTA with pre-filter
A/D Converter	24 bit delta sigma technology
Power Consumption (typical)	< 10 W for 12 channel instrument with internal controller
Data Storage	4 GByte replaceable Compact Flash (hot pluggable)
Instantaneous Dynamic Range	≥ 120 dB @ 2 ms sampling interval
Equivalent Input Noise	Less than 0.3 μV RMS @ 2 ms sampling interval and 40 dB preamp gain
Crosstalk	≥ 112 dB (between all channels)
Total Harmonic Distortion	< 0.0008 %
Common Mode Rejection Ratio	≥ 100 dB
Gain Accuracy	< 0.2 % between channels after calibration
Dimensions	30 x 25 x 20 cm
Weight	4.5 kg

Subject to technical changes

Environmental Specifications

Operation Temperature	-30°C to + 70°C
Humidity Range	0 – 95 %
Case	Solid waterproof housing deployable in any surface environment



Instrumentation at a bridge base plate



Monitoring of footings

DMT GmbH & Co. KG
Exploration & Geosurvey

Am Technologiepark 1
45307 Essen, Germany

Phone +49 201-172-1970
Fax +49 201-172-1971
info.summit@dm.de
www.summit-system.de

Member of TÜV NORD Group

DIN EN ISO
9001
certified