

AQ-Gamma Shuttle

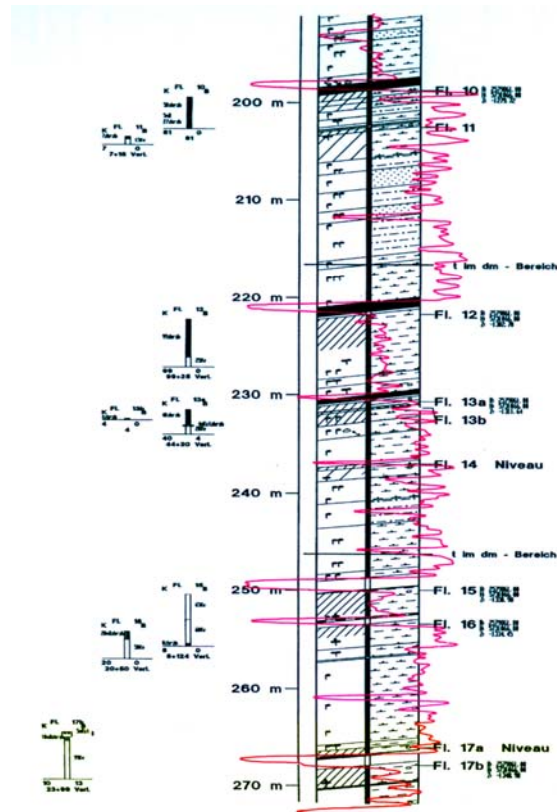
DMT downhole tool

The AQ-Gamma Shuttle, suitable for AQ rods, is fitted with a 0.5 x 1 inch NaJ Gamma Ray detector to measure natural gamma-rays and is fully covered within the inner core barrel.

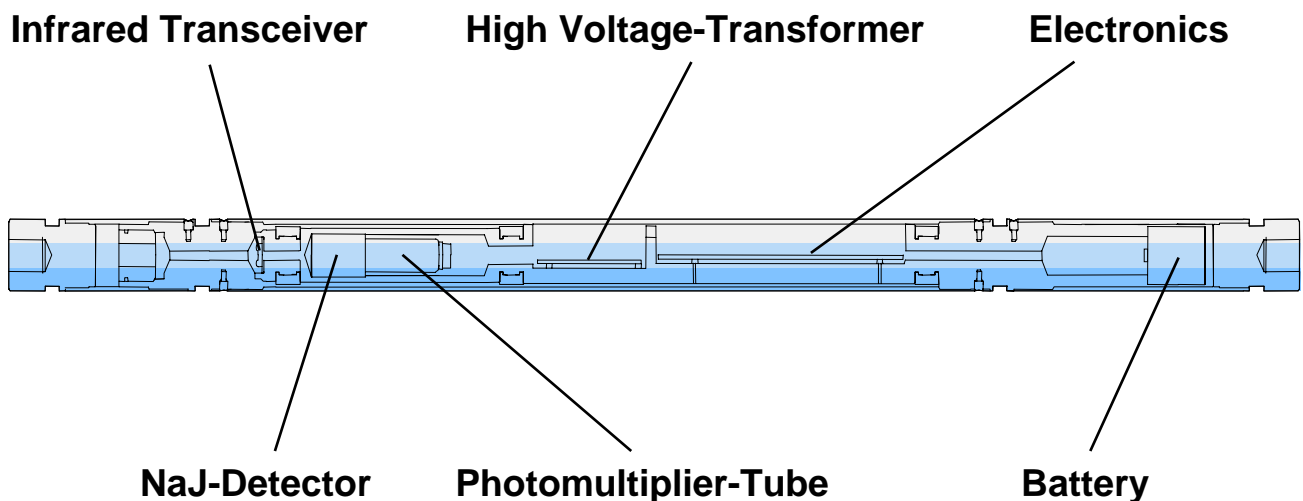
Being intrinsically safe it can be operated in explosion hazardous areas like coal mines from the surface and underground.

The figure on the left shows a lithology log overlaid by a gamma-ray curve.

It shows clearly that different rocks are distinguished and the thickness and structure of coal seams can be detected.



Log from AQ-Gamma Shuttle overlaying Lithology



Technical Data	
Tool length	1070 mm
Tool diameter	32 mm
Weight	3.8 kg
Maximum depth	800 m
Maximum pressure	800 bar
Maximum temperature	70° Celcius
Working time	24 hours
Logging speed recommended	6 m/m
Minimum borehole diameter	40 mm
Core barrel size	AQ
Sensors	NaJ Gamma ray detector
Parameters logged	Gamma-Ray
	Structure
	Thickness

Subject to change

DMT GmbH & Co. KG
Exploration & Geosurvey

Am Technologiepark 1
45307 Essen, Germany

Phone +49 201 172-1970
Fax +49 201 172-1971
exploration@dmtd.de
www.dmt.de

Member of TÜV NORD Group

