

DMT CoreScan[®]3

Digital Drill Core Imaging System for Oil and Gas Exploration

Portable core imaging device in combination with a set of analysis software developed for drill core image acquisition, storage and evaluation. Images of full circumference (360°) and core boxes of any dimension can be scanned and analysed.

Functions

- Applicable on any core drilling project
- Portable stand alone system
- Online global accessibility of core images
- Digital drill core library
- Structure analysis and presentation
- Analysis of mineral content
- Determination of grain size distribution
- Derivation of geotechnical parameters (RQD)

Services

- Selling and leasing of the CoreScan system
- Training on the CoreScan system
- Scanning of drill cores
- Re-orientation of the drill core log according to borehole inclination and deviation
- Structural and petrographical analysis of drill cores



Heavily broken cores to scan and analyse

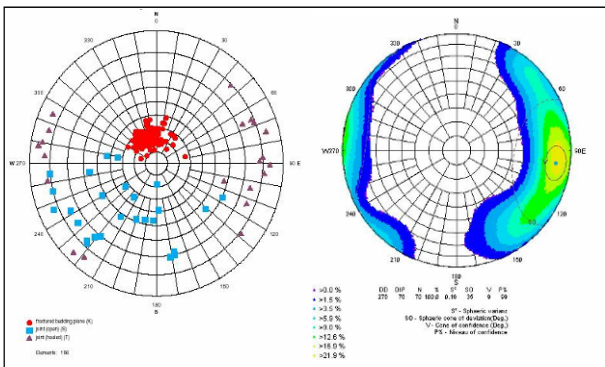


DMT CoreScan3

Exploration for Oil and Gas

Tasks

- Scanning of drill cores up to 300 m per day
- Creation of a digital drill core library with quick search functions
- Re-orientation of the drill core log according to borehole inclination and deviation
- Structural analysis of drill cores
- Special routine for structural analysis of heavily broken drill cores
- Derivation of geotechnical parameters (RQD), fracture density, fracture distance



Pole and density diagram

Technical Specifications

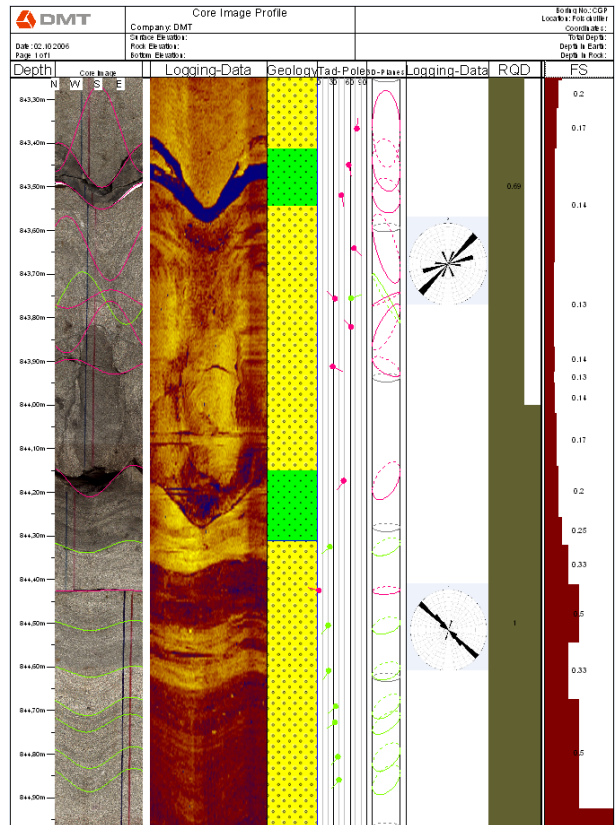
- Dimensions: Length: 1.36 m, Depth: 0.75 m, Height: 1.28 m, Weight: 128 kg
- Electric power supply: Voltage 110 VAC – 250 VAC, 50Hz/60Hz; power (pmax) 500 VA
- Core length: up to 1 m (full circumference and slabbed cores)
- Core diameter: 25 to 150 mm (unrolled core), up to 250 mm (slabbed)
- Resolution: 5, 10 and 40 pixel/mm (127, 250 and 1000 dpi)

DMT GmbH & Co. KG
Exploration & Geosurvey

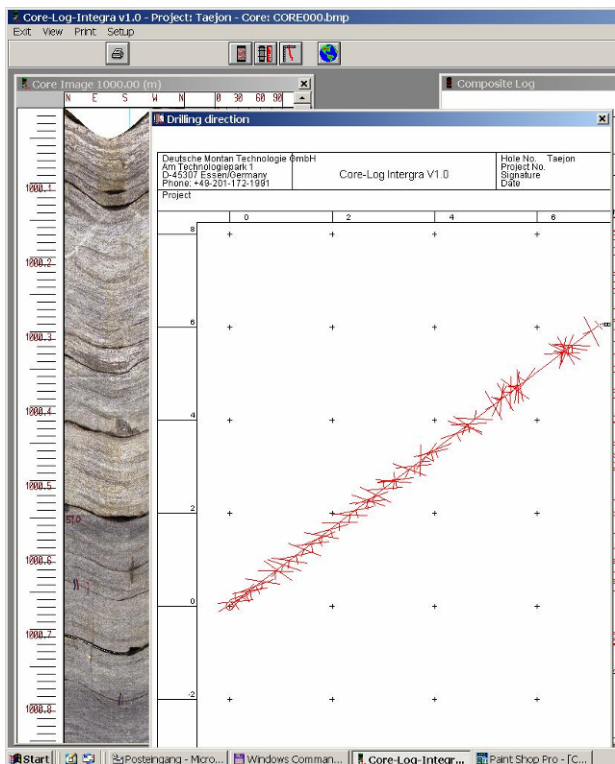
Am Technologiepark 1
D-45307 Essen, Germany

Phone +49 201-172 1970
Fax +49 201-172 1971
info.corescan@dm.de
www.corescan.de

Member of TÜV NORD Group



Core image with marked structures and composite log



Borehole deviation diagram